

This drawing is copyright ©. All dimensions to be checked on site prior to commencement of work.  
Rock Townsend Limited to be notified of any omissions or errors.

Reproduced by Rock Townsend using OS licensing no. 100031961

0 10 20 m  
1:500

Site Boundary

P2	Site Address Updated	16/03/29	JF
P1	Issue For Planning	16/03/16	JF
C	Issue For Comment prior to planning submission	16/03/11	JF
B	Drawing Issue	16/02/07	JF
A	First Issue For Comment	16/01/29	JF
REVISION		DATE/DRAWN	

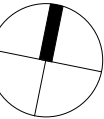
Key

The Old School Eton Street, London, SE1 8UE T 1 020 7261 9577 W 1 www.rocktownsend.co.uk	PROJECT 1A-5 St Johns Road		Rock Townsend
	Isleworth, TW7 6NA		
	DRAWING TITLE Proposed Site Plan		
	DATE 15/01/16	DRAWN JF	
	SCALE 1 : 500 @ A3	CHECK	
	STATUS PLANNING		
	JOB NO. RT15004		
DRAWING NO. 004		REVISION P2	

Proposed Site Plan  
1 : 500

0 2 4 6 8 m

1:100



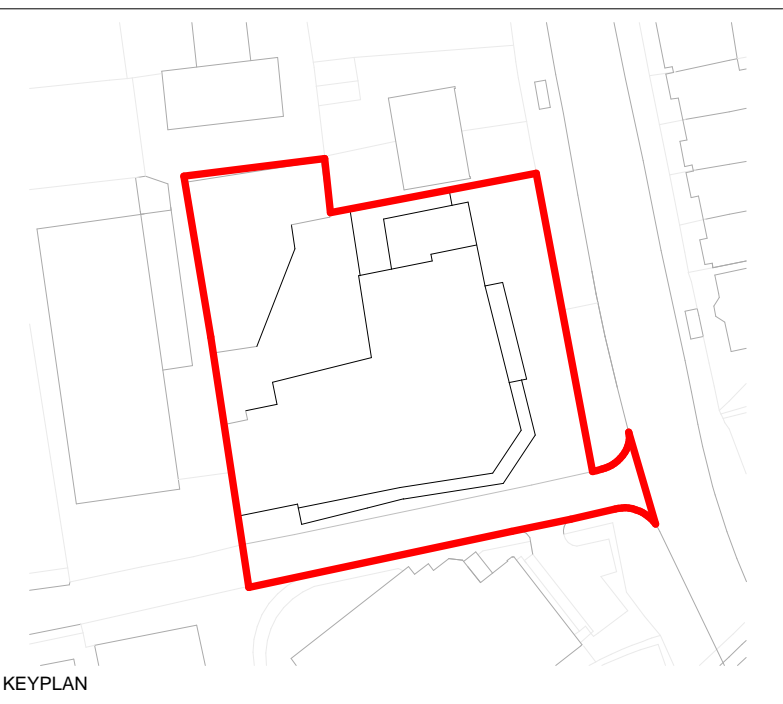
Site Boundary  
Title Boundary

### Accommodation Schedule

Plot No.	Unit Type	Hab Rooms	Level	Area	Amenity Area	Primary Orientation	Secondary Orientation
0	Car park	0	L0_Ground Floor Plan	487 m <sup>2</sup>	0 m <sup>2</sup>		
0	Circulation	0		255 m <sup>2</sup>	0 m <sup>2</sup>		
0	Communal Amenity	0		0 m <sup>2</sup>	207 m <sup>2</sup>		
0	Cycle Store	0	L0_Ground Floor Plan	33 m <sup>2</sup>	0 m <sup>2</sup>		
0	Lift	0		19 m <sup>2</sup>	0 m <sup>2</sup>		
0	Refuse	0	L0_Ground Floor Plan	31 m <sup>2</sup>	0 m <sup>2</sup>		
0	Service Risers	0		29 m <sup>2</sup>	0 m <sup>2</sup>		
0	Stair	0		89 m <sup>2</sup>	0 m <sup>2</sup>		
00-01	1B2P WC	2	L0_Ground Floor Plan	60 m <sup>2</sup>	0 m <sup>2</sup>	East	South
00-02	3B5P WC	4	L0_Ground Floor Plan	108 m <sup>2</sup>	55 m <sup>2</sup>	East / West	East / West
00-03	1B2P WC	2	L0_Ground Floor Plan	65 m <sup>2</sup>	60 m <sup>2</sup>	East / West	East / West
00-04	3B5P WC	4	L0_Ground Floor Plan	89 m <sup>2</sup>	70 m <sup>2</sup>	East / West	East / West
01-05	2B4P	3	L1_First Floor Plan	75 m <sup>2</sup>	7 m <sup>2</sup>	North	West
01-06	2B3P	3	L1_First Floor Plan	69 m <sup>2</sup>	6 m <sup>2</sup>	North / South	North / South
01-07	2B4P	3	L1_First Floor Plan	77 m <sup>2</sup>	7 m <sup>2</sup>	South	West
01-09	2B4P	3	L1_First Floor Plan	70 m <sup>2</sup>	7 m <sup>2</sup>	East	South
01-10	1B2P	2	L1_First Floor Plan	50 m <sup>2</sup>	5 m <sup>2</sup>	East	North
01-11	1B2P	2	L1_First Floor Plan	50 m <sup>2</sup>	5 m <sup>2</sup>	East	North
01-12	1B2P	2	L1_First Floor Plan	53 m <sup>2</sup>	6 m <sup>2</sup>	East / West	East / West
01-13	2B4P	3	L1_First Floor Plan	75 m <sup>2</sup>	7 m <sup>2</sup>	West	North
01-12-08	3B5P DUP	4		109 m <sup>2</sup>	14 m <sup>2</sup>	South	West
02-14	2B4P	3	L2_Second Floor Plan	75 m <sup>2</sup>	7 m <sup>2</sup>	North	West
02-15	2B3P	3	L2_Second Floor Plan	68 m <sup>2</sup>	6 m <sup>2</sup>	North / South	North / South
02-16	2B4P	3	L2_Second Floor Plan	77 m <sup>2</sup>	6 m <sup>2</sup>	South	West
02-17	2B4P	3	L2_Second Floor Plan	70 m <sup>2</sup>	7 m <sup>2</sup>	East	South
02-18	1B2P	2	L2_Second Floor Plan	50 m <sup>2</sup>	5 m <sup>2</sup>	East	South
02-19	1B2P	2	L2_Second Floor Plan	50 m <sup>2</sup>	5 m <sup>2</sup>	East	North
02-20	1B2P	2	L2_Second Floor Plan	53 m <sup>2</sup>	5 m <sup>2</sup>	East / West	East - West
02-21	2B4P	3	L2_Second Floor Plan	75 m <sup>2</sup>	7 m <sup>2</sup>	West	North
03-22	2B4P	3	L3_Third Floor Plan	75 m <sup>2</sup>	7 m <sup>2</sup>	North	West
03-23	2B3P	3	L3_Third Floor Plan	68 m <sup>2</sup>	6 m <sup>2</sup>	North / South	North / South
03-24	2B3P	3	L3_Third Floor Plan	63 m <sup>2</sup>	10 m <sup>2</sup>	South	East
03-26	3B4P	4	L3_Third Floor Plan	84 m <sup>2</sup>	18 m <sup>2</sup>	South	East
03-27	2B4P	3	L3_Third Floor Plan	82 m <sup>2</sup>	7 m <sup>2</sup>	East	North
03-28	2B4P	3	L3_Third Floor Plan	75 m <sup>2</sup>	7 m <sup>2</sup>	West	North
03/4-25	3B4P DUP	4		94 m <sup>2</sup>	16 m <sup>2</sup>	South	West
04-30	2B3P	3	L4_Fourth Floor Plan	68 m <sup>2</sup>	6 m <sup>2</sup>	North / South	North / South
04-31	2B3P	3	L4_Fourth Floor Plan	63 m <sup>2</sup>	6 m <sup>2</sup>	South	East
04-32	2B4P	3	L4_Fourth Floor Plan	75 m <sup>2</sup>	7 m <sup>2</sup>	South	East
04-33	2B4P	3	L4_Fourth Floor Plan	69 m <sup>2</sup>	7 m <sup>2</sup>	East / north	East / North
04/5-29	3B5P DUP	4		107 m <sup>2</sup>	7 m <sup>2</sup>	North / South / East	North / South / East
04/5-34	3B5P DUP	4		111 m <sup>2</sup>	7 m <sup>2</sup>	North / East / West	North / East / West
Grand total:	72	101		3443 m <sup>2</sup>	615 m <sup>2</sup>		

P3	16/03/29	Site Address Updated	JF
P2	16/03/18	Issue For Planning	JF
P1	16/03/16	Issue For Planning	JF
H	16/03/11	Issue For Comment prior to planning submission	JF
G	16/03/02	Drawing reissue with minor changes	JF
F	16/03/02	Updated layouts issue team ahead of pre-app	JF
E	16/02/29	Updated layouts issue to TPA	JF
D	16/02/25	Updated layouts issue to team	JF
C	16/02/15	Updated layouts issue to Transport Planning Associates	JF
B	16/02/04	Revised floor plans in CAD format issued to the team for comment	JF
A	16/01/29	First Issue For Comment	JF

REVISIONS DATE/DRAWN



KEYPLAN

PROJECT 1A-5 St Johns Road

Isleworth, TW7 6NA

DRAWING TITLE L0

Ground Floor Plan

Accommodation Schedule

DATE 01/26/16

DRAWN JF

SCALE As indicated

CHECK

STATUS PLANNING

JOB NO. RT15004

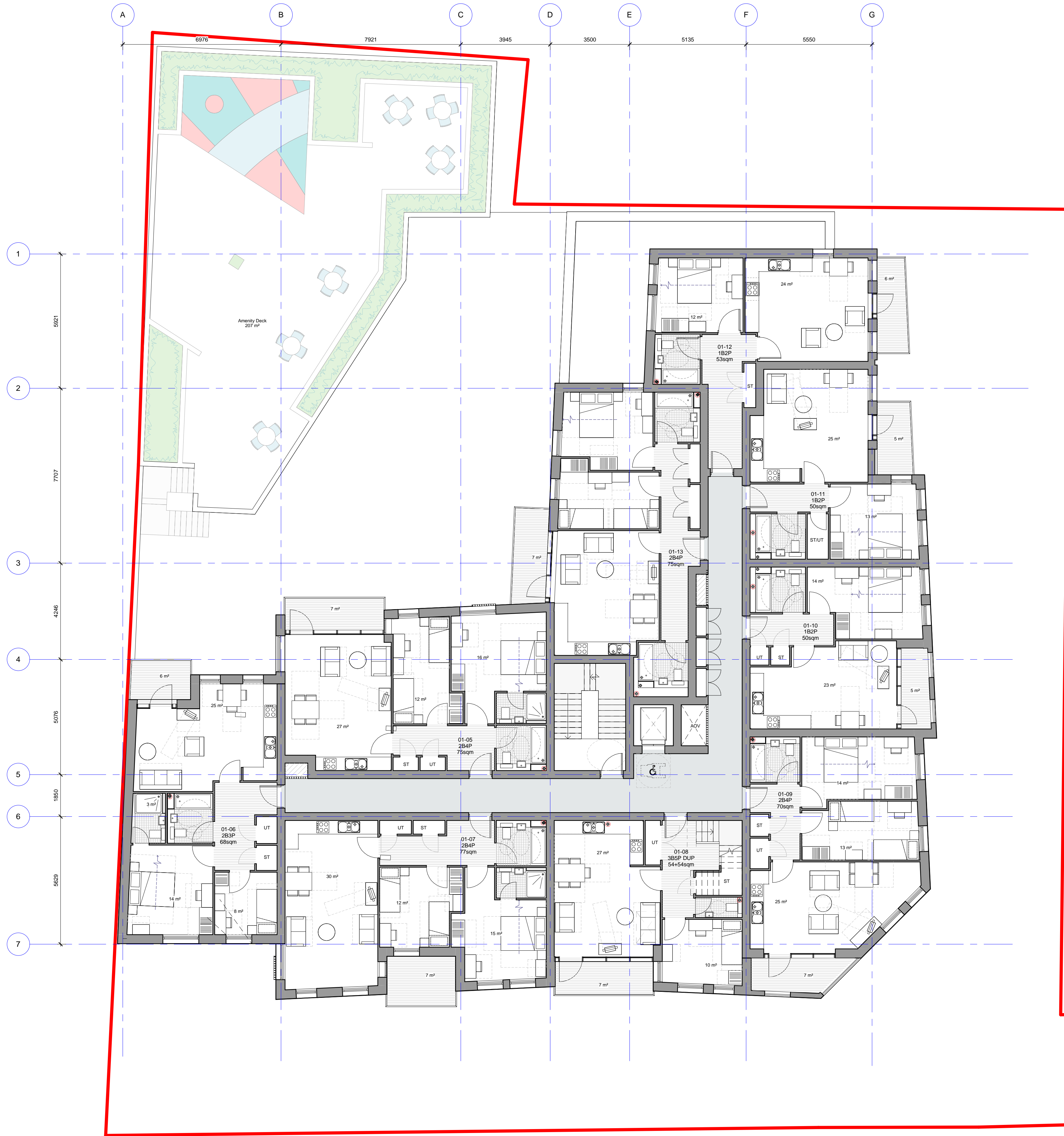
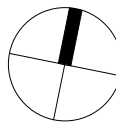
DRAWING NO. 010

REVISION P3



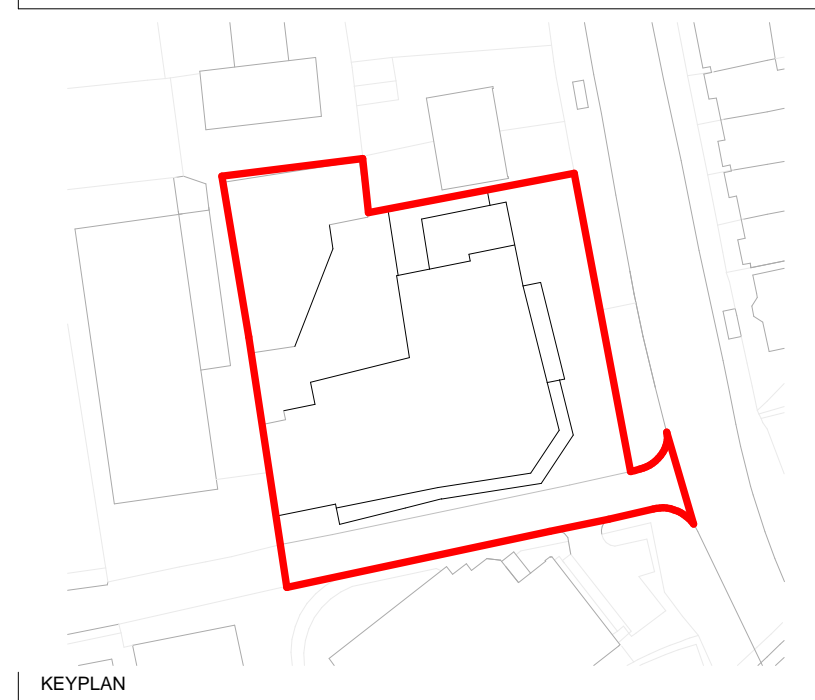
0 2 4 6 8 m

1:100



P2	16/03/29	Site Address Updated	JF
P1	16/03/16	Issue For Planning	JF
G	16/03/11	Issue For Comment prior to planning submission	JF
F	16/03/02	Drawing reissue with minor changes	JF
E	16/03/02	Updated layouts issue team ahead of pre-app	JF
D	16/02/25	Updated layouts issue to team	JF
C	16/02/15	Updated layouts issue to Transport Planning Associates	JF
B	16/02/04	Revised floor plans in CAD format issued to the team for comment	JF
A	16/01/29	First Issue For Comment	JF

REVISIONS	DATE/DRAWN
-----------	------------



KEY PLAN

PROJECT 1A-5 St Johns Road

Isleworth, TW7 6NA

DRAWING TITLE L1

First Floor Plan

DATE 01/26/16

DRAWN JF

SCALE As indicated

CHECK

STATUS PLANNING

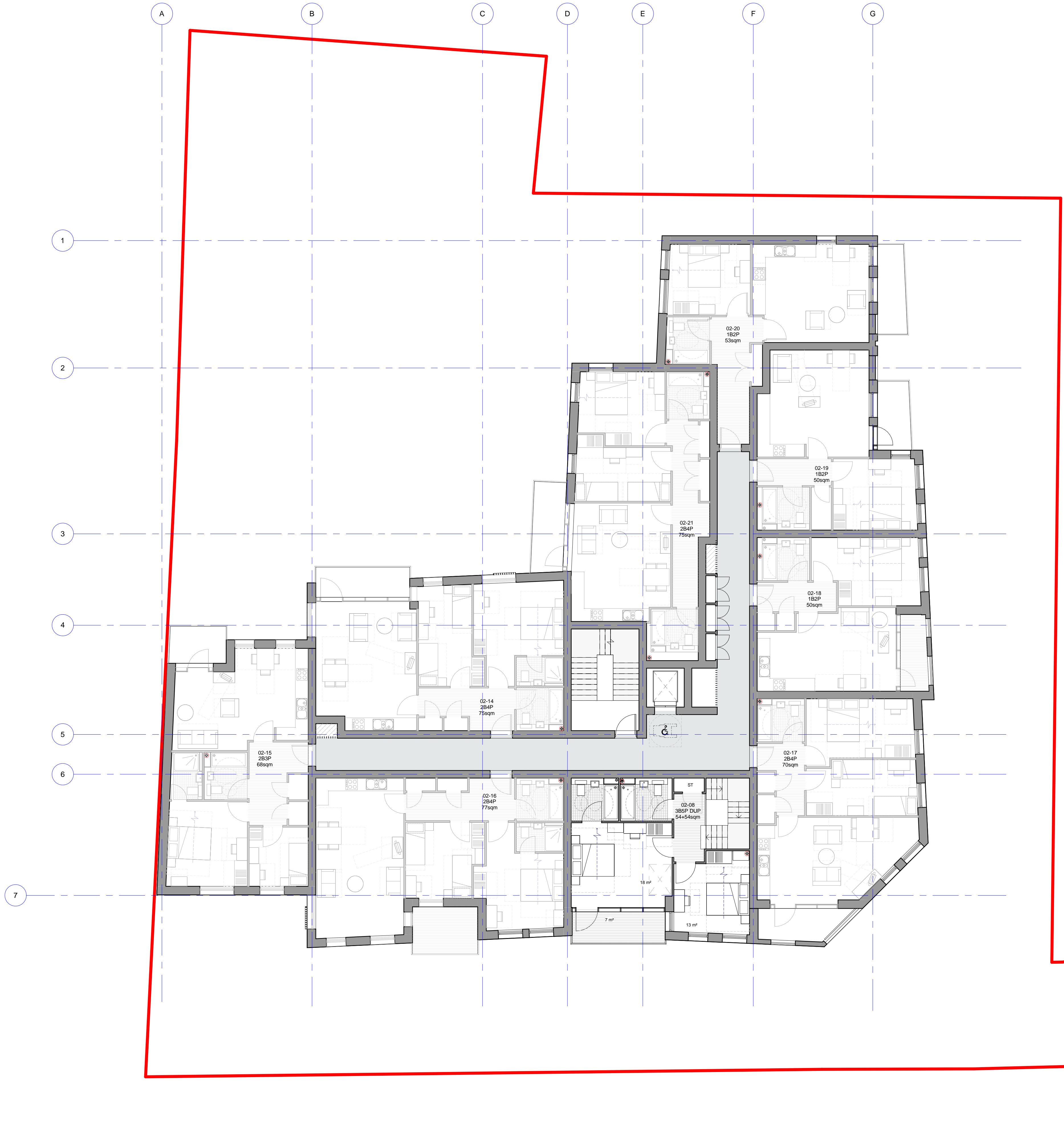
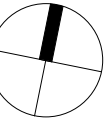
JOB NO. RT15004

DRAWING NO. 011

REVISION P2

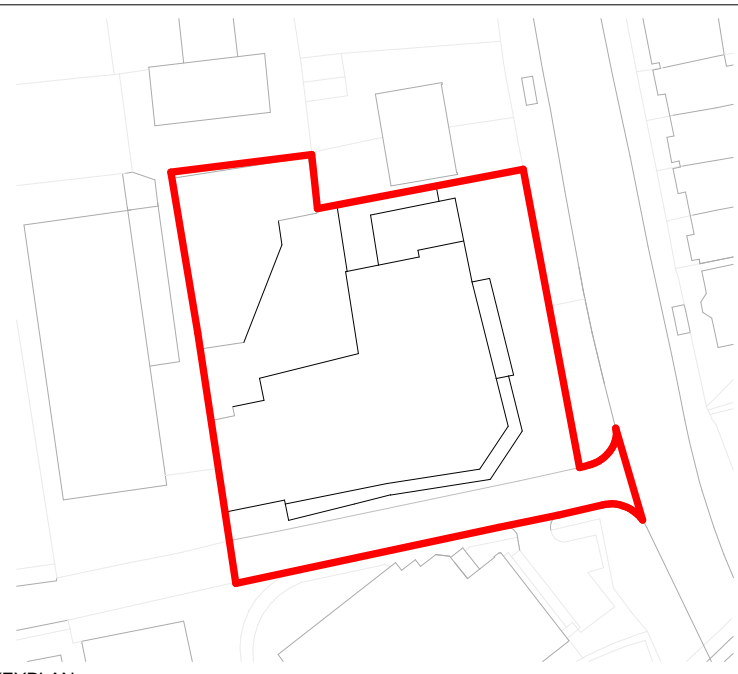
0 2 4 6 8 m

1:100



P2	16/03/29	Site Address Updated	JF
P1	16/03/16	Issue For Planning	JF
C	16/03/11	Issue For Comment prior to planning submission	JF
B	16/03/02	Drawing reissue with minor changes	JF
A	16/03/02	Updated layouts issue team ahead of pre-app	JF

REVISIONS DATE/DRAWN



KEYPLAN

PROJECT 1A-5 St Johns Road  
Isleworth, TW7 6NA  
DRAWING TITLE L2  
Second Floor Plan

DATE 02/29/16 DRAWN JF

SCALE As indicated @ A1 CHECK

STATUS PLANNING

JOB NO. RT15004

DRAWING NO. 012 REVISION P2

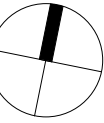
The Old School, Eton Street, London, SE1 8UE T 020 7261 9577 www.rocktownsend.co.uk

Rock Townsend



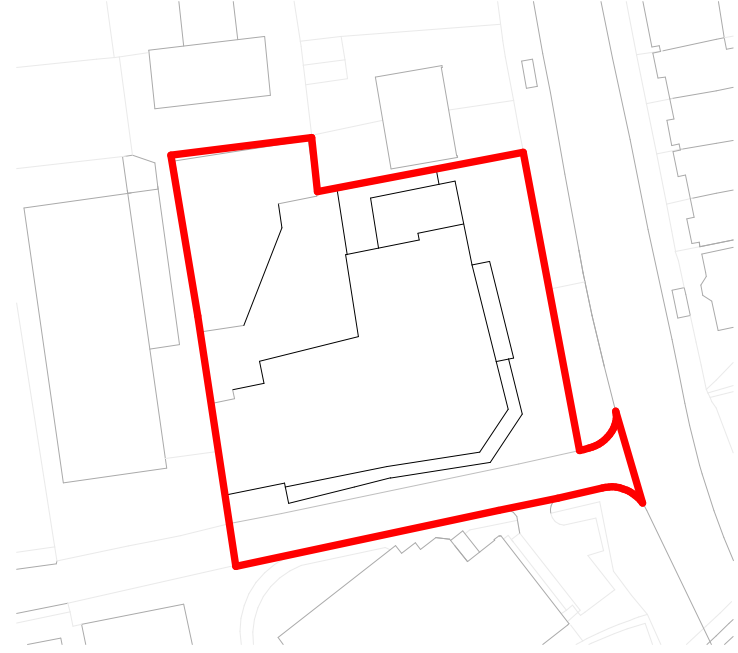
0 2 4 6 8 m

1:100



P2	16/03/29	Site Address Updated	JF
P1	16/03/16	Issue For Planning	JF
G	16/03/11	Issue For Comment prior to planning submission	JF
F	16/03/02	Drawing reissue with minor changes	JF
E	16/03/02	Updated layouts issue team ahead of pre-app	JF
D	16/02/26	Updated layouts issue to team	JF
C	16/02/15	Updated layouts issue to Transport Planning Associates	JF
B	16/02/04	Revised floor plans in CAD format issued to the team for comment	JF
A	16/01/29	First Issue For Comment	JF

REVISIONS	DATE/DRAWN
-----------	------------



KEY PLAN

PROJECT 1A-5 St Johns Road  
Isleworth, TW7 6NA  
DRAWING TITLE L3  
Third Floor Plan

DATE 01/26/16 DRAWN JF

SCALE As indicated @ A1 CHECK

STATUS PLANNING

JOB NO. RT15004

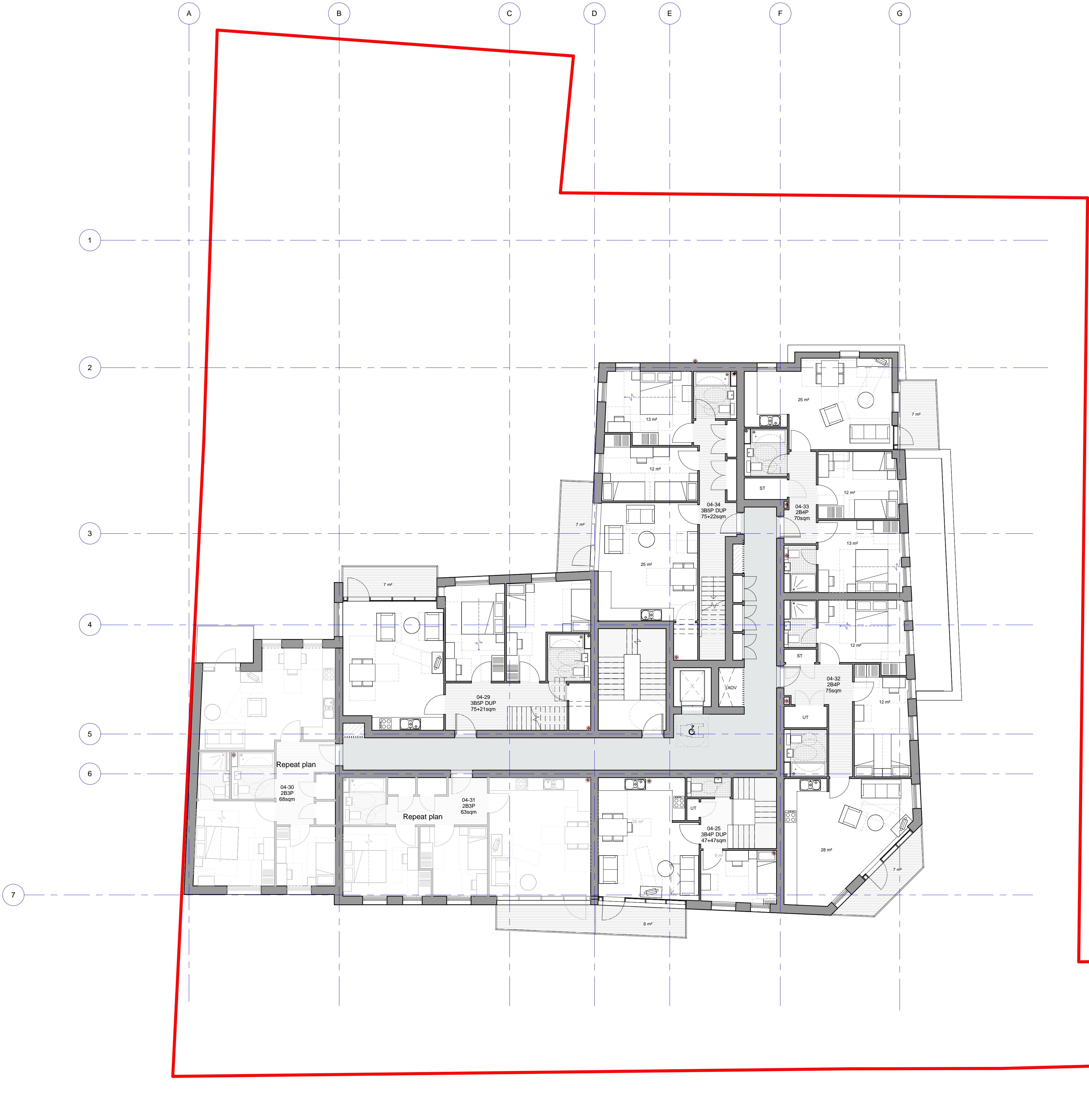
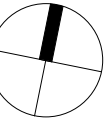
DRAWING NO. 013 REVISION P2

The Old School, Exton Street, London, SE1 8UE T 020 7261 9577 www.rocktownsend.co.uk

Rock Townsend

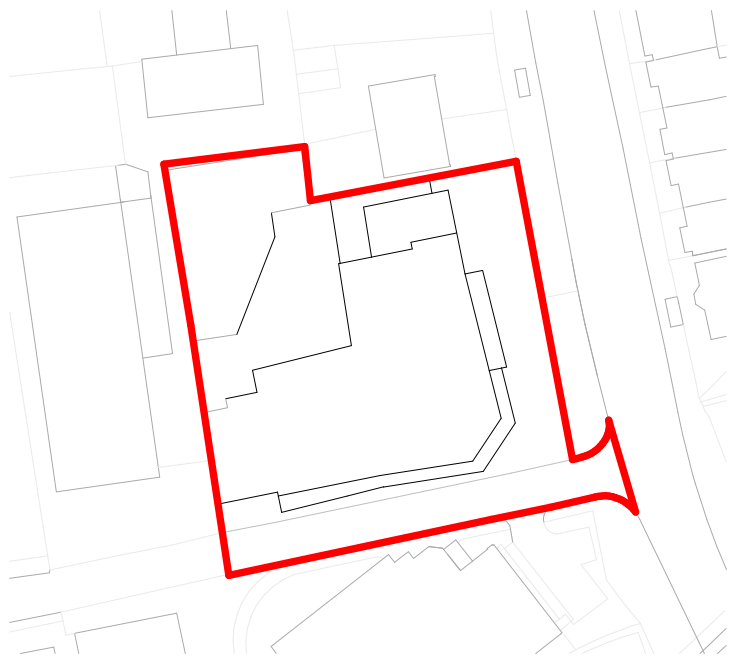
0 2 4 6 8 m

1:100



P2	16/03/29	Site Address Updated	JF
P1	16/03/16	Issue For Planning	JF
G	16/03/11	Issue For Comment prior to planning submission	JF
F	16/03/02	Drawing reissue with minor changes	JF
E	16/03/02	Updated layouts issue team ahead of pre-app	JF
D	15/02/25	Updated layouts issue to team	JF
C	16/02/15	Updated layouts issue to Transport Planning Associates	JF
B	16/02/04	Revised floor plans in CAD format issued to the team for comment	JF
A	16/01/29	First Issue For Comment	JF

REVISIONS	DATE/DRAWN
-----------	------------



PROJECT 1A-5 St Johns Road  
Isleworth, TW7 6NA  
DRAWING TITLE L4  
Fourth Floor Plan

DATE 01/26/16 DRAWN JF

SCALE As indicated @ A1 CHECK

STATUS PLANNING

JOB NO. RT15004

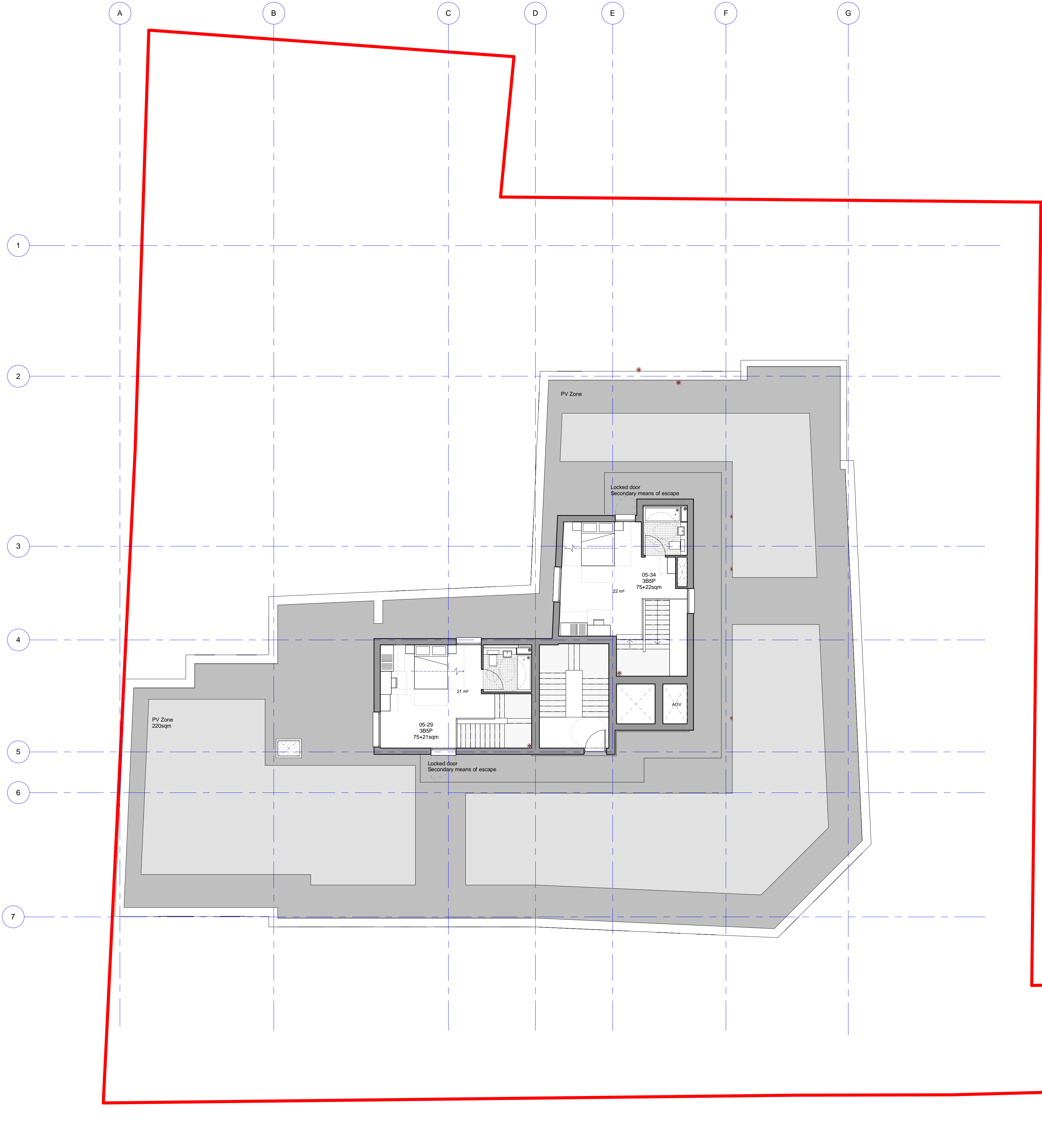
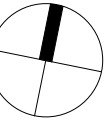
DRAWING NO. 014 REVISION P2

The Old School, Exton Street, London, SE1 8UE T 020 7261 9577 www.rocktownsend.co.uk

Rock Townsend

0 2 4 6 8 m

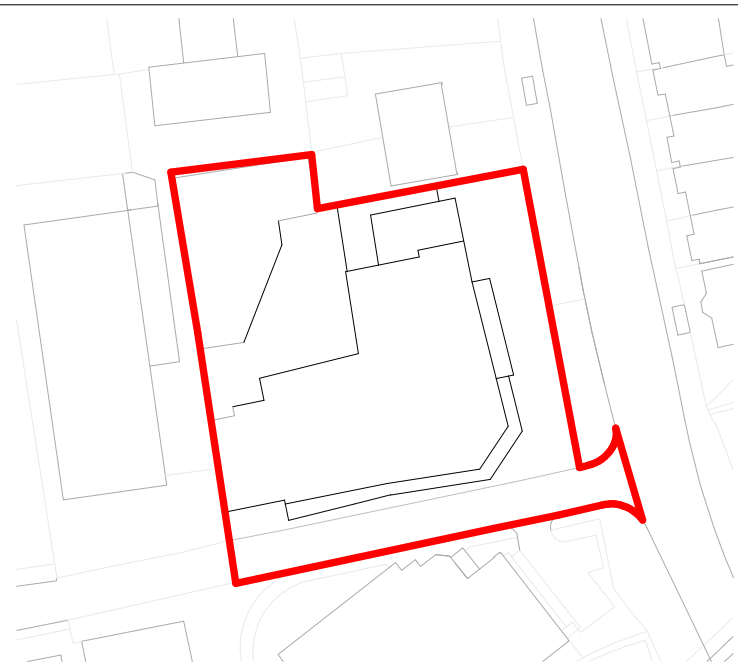
1:100



P2	16/03/20	Site Address Updated	JF
P1	16/03/16	Issue For Planning	JF
D	16/03/11	Issue For Comment prior to planning submission	JF
C	02/03/15	Drawing reissue with minor changes	JF
B	02/03/15	Updated layouts issue team ahead of pre-app	JF

A	25/02/15	Updated layouts issue to team	JF
---	----------	-------------------------------	----

REVISIONS	DATE/DRAWN
-----------	------------



KEY PLAN

PROJECT	1A-5 St Johns Road
	Isleworth, TW7 6NA
DRAWING TITLE	L5
	Fifth Floor Plan
DATE	02/23/16
SCALE	As indicated @ A1
STATUS	PLANNING
JOB NO.	RT15004
DRAWING NO.	015
	REVISION P2

The Old School, Exton Street, London, SE1 8UE T | 020 7261 9577 www.rocktownsend.co.uk

Rock Townsend





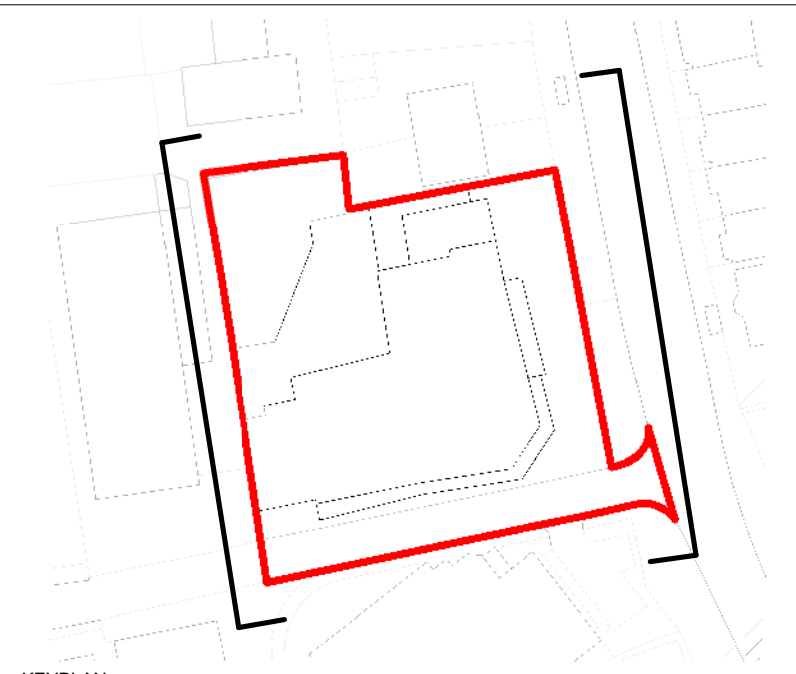
- Material Legend
- A Brick - Light Buff - Majestic 65
  - B Powder coated aluminium double glazed windows and doors RAL 7032
  - C Powder coated aluminium coping RAL 7032
  - D Powder coated aluminium balcony railing at 100 centres RAL 7032
  - E Brick - Red - Multi Facings Freshfield
  - F Brick - Red - Multi Facings Freshfield Brick
  - G Light grey rainscreen cladding
  - H Powdercoated aluminium vertical louvers system to obscure overlooking RAL 7032
  - I Powdercoated aluminium vertical louvers for ventilation RAL 7032
  - J Bricks - Glazed green
  - K Defensible planting
  - L 450x450mm Paving Slabs
  - M Block Paving - Light grey
  - N Cobble stones set in concrete to form defensible perimeter boundary
  - O Grass
  - P 225x440mm Paving Slabs
  - Q Neighbouring development
  - R Soft tarmac zone, Childrends play area

East Elevation 1:200



P3	16/03/29	Site Address Updated	JF
P2	16/03/18	Issue For Planning	JF
P1	16/03/16	Issue For Planning	JF
F	16/03/11	Issue For Comment prior to planning submission	JF
E	16/03/04	Issued for comment	JF
D	16/03/02	Issued for comment	JF
C	16/02/25	Updated layouts issue to team	JF
B	16/02/17	Printed for Pre App	JF
A	16/01/29	First Issue For Comment	JF

REVISIONS DATE/DRAWN



KEYPLAN

PROJECT	1A-5 St Johns Road	Rock Townsend
DRAWING TITLE	Isleworth, TW7 6NA	
DRAWING TITLE	East / West Elevations	
DATE	01/20/16	DRAWN JF
SCALE	1 : 200 @ A1	CHECK
STATUS	PLANNING	
JOB NO.	RT15004	
DRAWING NO.	110	REVISION P3





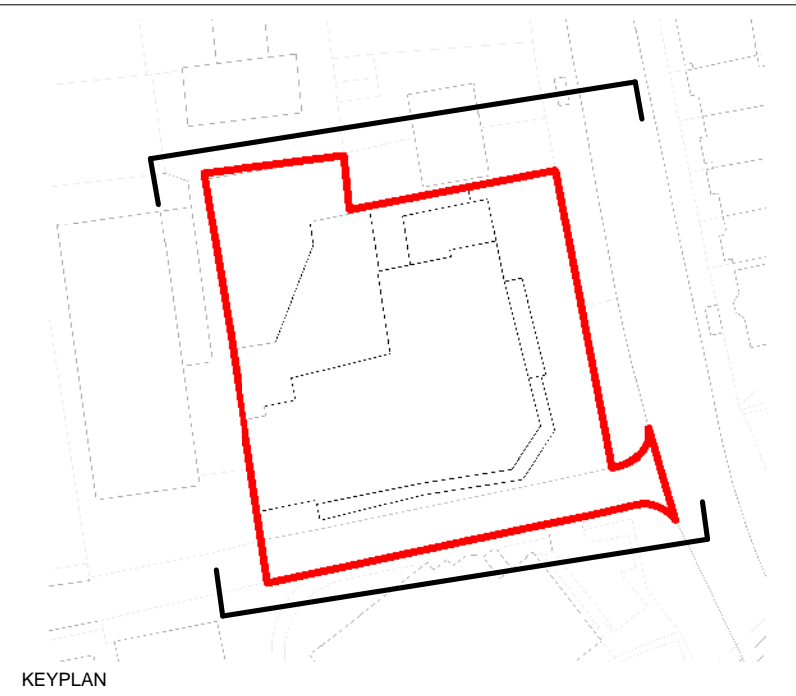
- Material Legend
- Ⓐ Brick - Light Buff - Majestic 65
  - Ⓑ Powder coated aluminium double glazed windows and doors RAL 7032
  - Ⓒ Powder coated aluminium coping RAL 7032
  - Ⓓ Powder coated aluminium balcony railing at 100 centres RAL 7032
  - Ⓔ Brick - Red - Multi Facings Freshfield Brick - Vertically stacked double soldier course
  - Ⓕ Brick - Red - Multi Facings Freshfield Brick
  - Ⓖ Light grey rainscreen cladding
  - Ⓗ Powdercoated aluminium vertical louvers system to obscure overlooking RAL 7032
  - Ⓘ Powdercoated aluminium vertical louvers for ventilation RAL 7032
  - Ⓣ Bricks - Glazed green
  - Ⓚ Defensible planting
  - Ⓛ 450x450mm Paving Slabs
  - Ⓜ Block Paving - Light grey
  - Ⓝ Cobble stones set in concrete to form defensible perimeter boundary
  - Ⓞ Grass
  - Ⓟ 225x450mm Paving Slabs
  - Ⓠ 225x450mm Paving Slabs
  - Ⓡ Soft tarmac zone. Childrens play area

North Elevation 1:200



P3	16/03/29	Site Address Updated	JF
P2	16/03/18	Issue For Planning	JF
P1	16/03/16	Issue For Planning	JF
F	16/03/11	Issue For Comment prior to planning submission	JF
E	16/03/04	Issued for comment	JF
D	16/03/02	Issued for comment	JF
C	16/02/25	Updated layouts issue to team	JF
B	16/02/17	Printed for Pre App	JF
A	16/01/29	First Issue For Comment	JF

REVISIONS DATE/DRAWN



KEYPLAN

PROJECT	1A-5 St Johns Road	Rock Townsend
DRAWING TITLE	North / South Elevation	
DATE	01/20/16	DRAWN JF
SCALE	1 : 200 @ A1	CHECK
STATUS	PLANNING	
JOB NO.	RT15004	
DRAWING NO.	111	REVISION P3